

Rail-to-Rail Input and Output, Low Voltage, High Slew Rate, Wide Bandwidth Dual Operational Amplifiers

FEATURES

- CMOS rail to rail input and output
- 2.7 to 6.5V single supply operation
- Gain-Bandwidth Product : 12MHz
- High slew rate : 6V/ μ s
- No crossover distortion
- Space saving SOP8 package
- Cost efficient
- Pin assignments is the same as the general-purpose dual operational amplifiers

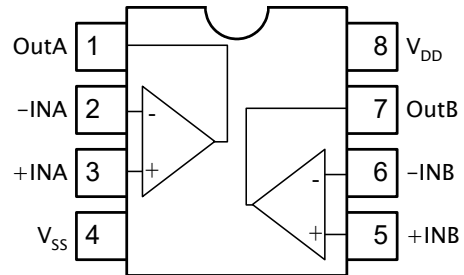
APPLICATIONS

- Active filters
- Servo amplifier
- Multimedia system
- Digital to Analog Converter buffers
- Laptop 、 Set-Top BOX
- Microphone preamplifier
- Cross-reference to low voltage application :
NJM2100, BA4510
TLV2632, TLV2772
TS462

DESCRIPTION

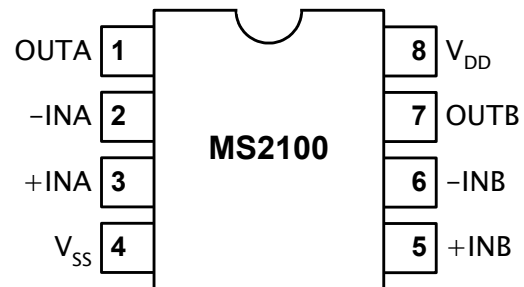
The MS2100 is high slew rate CMOS operation amplifier optimize for low voltage, single supply operation. It designed to be used for general purpose amplifier of general electronic equipment for consumer appliances.

BLOCK DIAGRAM



PIN CONFIGURATION

Symbol	Pin	Description
OutA	1	output A
-INA	2	inverting input A
+INA	3	non-inverting input A
V _{SS}	4	negative supply
+INB	5	non-inverting input B
-INB	6	inverting input B
OutB	7	output B
V _{DD}	8	positive supply



ORDERING INFORMATION

Package	Part number	Packaging Marking	Transport Media
8-Pin SOP (lead free)	MS2100GTR	MS2100 (G)	2.5k Units Tape and Reel
8-Pin SOP (lead free)	MS2100GU	MS2100 (G)	100 Units Tube

RoHS Compliance

ABSOLUTE MAXIMUM RATINGS

Symbol	Parameter	Rating	Unit
V _{DD}	Supply Voltage	6.5	V
V _{ESD}	Electrostatic Handling	-4000 to 4000	V
T _{STG}	Storage Temperature Range	-65 to 150	°C
T _A	Operating Ambient Temperature Range	-40 to 85	°C
T _J	Maximum Junction Temperature	150	°C
T _S	Soldering Temperature, 10 seconds	260	°C
R _{THJA}	Thermal Resistance from Junction to Ambient in Free Air SOP8	210	°C/W

OPERATING RATINGS

Symbol	Parameter	Min	Typ	Max	Unit
V _{DD}	Supply Voltage	2.7	-	6.5	V

5V ELECTRICAL CHARACTERISTICS

($T_a=25^\circ\text{C}$, $V_{DD}=5\text{V}$, $V_{SS}=0\text{V}$, $V_{CM}=V_O=V_{DD}/2$; unless otherwise specified)

Symbol	Parameter	Conditions	Min	Typ	Max	Unit
DC Characteristics						
I_Q	Quiescent current	Dual Amplifiers	-	2.6	-	mA
V_{OS}	Input Offset Voltage		-	1	5	mV
CMRR	Common Mode Rejection Ratio	$0 \leq V_{CM} \leq 4\text{V}$	65	75	-	dB
PSRR	Power supply rejection ratio	Ripple = -20dBV, 100Hz	-	70	-	dB
CS	Cannel separation	$f = 10\text{kHz}$	-	78	-	dB
V_{CM}	Common mode voltage	$\text{CMRR} \geq 50\text{dB}$	0.2	-	4	V
V_O	Output voltage swing	$R_L \geq 2.5\text{k}\Omega$	-	$V_{DD}-25$	$V_{DD}-15$	mV
AC Characteristics						
SR	Slew rate		-	6	-	V/ μs
GBWP	Gain bandwidth product		-	12	-	MHz
THD+N	Total harmonic distortion plus noise	$f = 1\text{kHz}$, $A_v = -1$ $R_L > 10\text{k}$, $V_{in} = 4\text{V}_{pp}$	-	-75	-70	dB

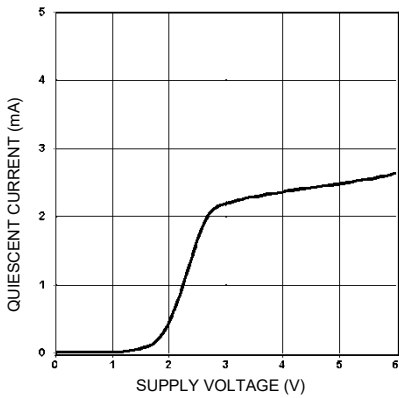
2.7V ELECTRICAL CHARACTERISTICS

($T_a=25^\circ\text{C}$, $V_{DD}=2.7\text{V}$, $V_{SS}=0\text{V}$, $V_{CM}=V_O=V_{DD}/2$; unless otherwise specified)

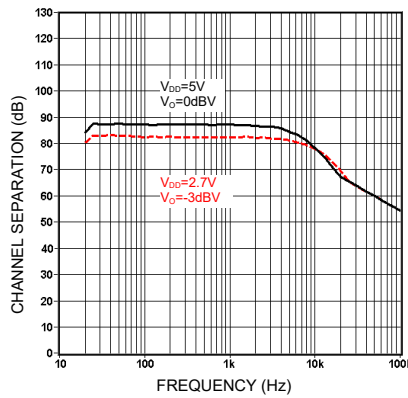
Symbol	Parameter	Test conditions	Min	Typ	Max	Unit
DC Characteristics						
I_Q	Quiescent current	Dual Amplifiers	-	2.1	-	mA
V_{OS}	Input offset voltage		-	1	5	mV
CMRR	Common mode rejection ratio	$0 \leq V_{CM} \leq 1.7\text{V}$	57	67	-	dB
PSRR	Power supply rejection ratio	Ripple = -20dBV, 100Hz	-	57	-	dB
CS	Cannel separation	$f = 10\text{kHz}$	-	78	-	dB
V_{CM}	Common mode voltage	$\text{CMRR} \geq 50\text{dB}$	0.2	-	1.7	V
V_O	Output voltage swing	$R_L \geq 2.5\text{k}\Omega$		$V_{DD}-70$	$V_{DD}-60$	mV
AC Characteristics						
SR	Slew rate		-	5	-	V/ μs
GBWP	Gain bandwidth product		-	11	-	MHz
THD+N	Total harmonic distortion plus noise	$f = 1\text{kHz}$, $A_v = -1$ $R_L > 10\text{k}$, $V_{in} = 2\text{V}_{pp}$	-	-70	-65	dB

TYPICAL PERFORMANCE CHARACTERISTICS

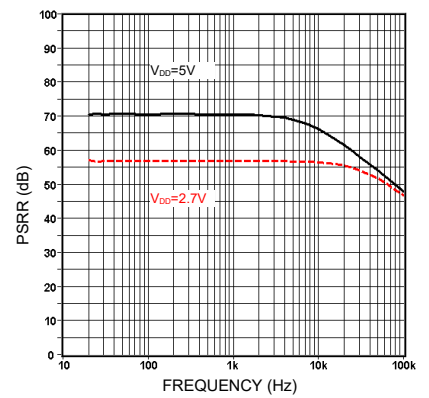
($T_a=25^{\circ}\text{C}$; unless otherwise specified)



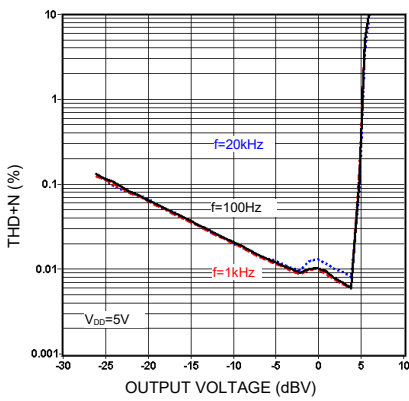
Quiescent current vs. supply voltage



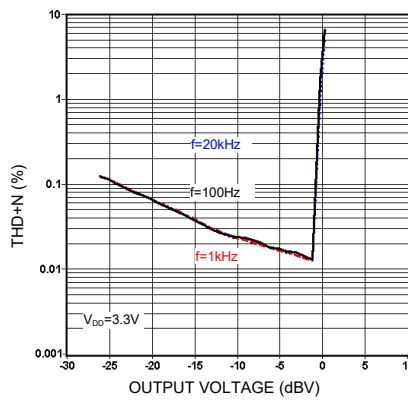
Channel separation vs. frequency



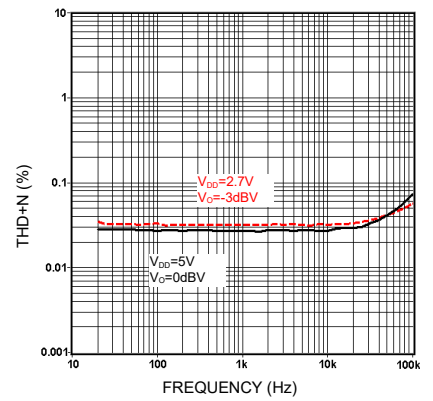
PSRR vs. frequency



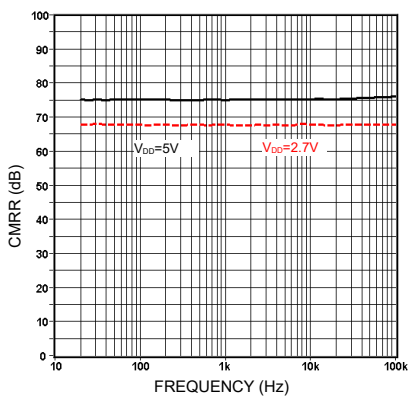
THD+N vs. output voltage



THD+N vs. output voltage



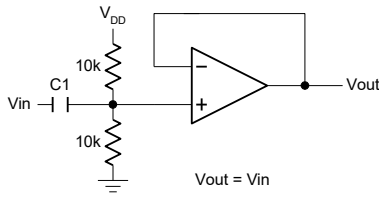
THD+N vs. frequency



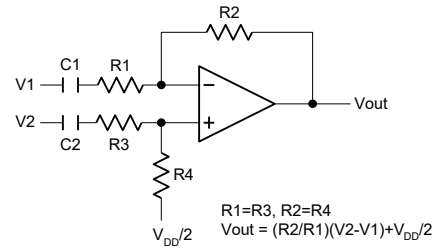
CMRR vs. frequency

APPLICATION INFORMATION (Single Supply)

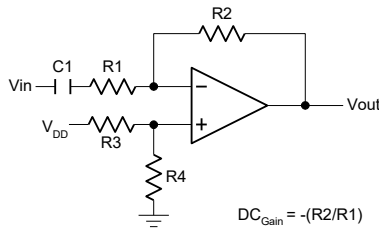
Voltage Follower



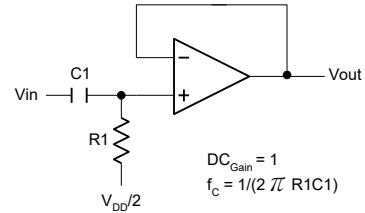
Difference Amplifier



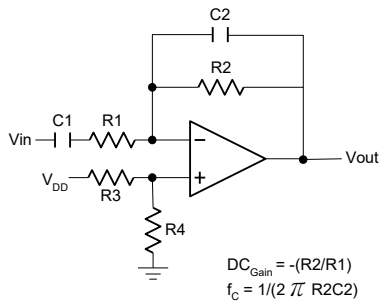
Inverting Amplifier



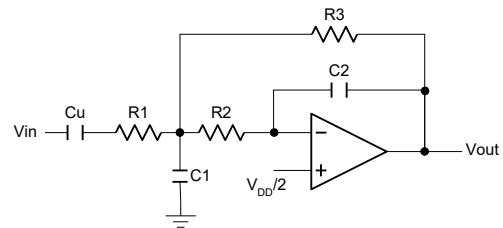
Simple High-Pass Filter



Simple Low-Pass Filter

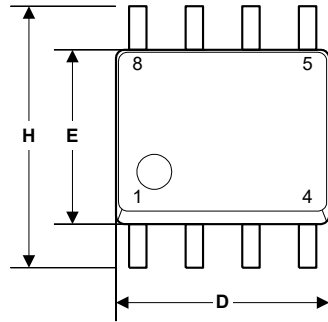


2nd Order Multiple Feedback Low-Pass Filter

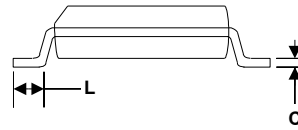
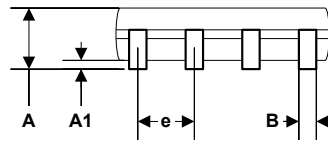


EXTERNAL DIMENSIONS

SOP8



Symbol	Dimension in mm		Dimension in inch	
	Min	Max	Min	Max
A	1.35	1.75	0.0532	0.0688
A1	0.10	0.25	0.0040	0.0098
B	0.33	0.51	0.013	0.020
C	0.19	0.25	0.0075	0.0098
D	4.80	5.00	0.1890	0.1968
H	5.80	6.20	0.2284	0.2440
E	3.80	4.00	0.1497	0.1574
e	1.27 BSC		0.050 BSC	
L	0.40	1.27	0.016	0.050



TAPE AND REEL (Unit : mm)

SOP8

